

# CWI

## Certified Welding & Inspection

### Specialization on Cell Phone Towers

**(100% Insured & Equipped to go Anywhere)**

## Ray Rodriguez

**32 years Welding Experience  
9 years Experience AWS D1.1 Inspector  
4 years Experience on Cell Phone Towers**

314 W. Madison St.  
Harlingen, Texas 78550

Office (956) 423-6003  
Fax (956) 423-2488  
Emergency # (956) 535-6003

E-mail: [certifiedwelding@sbcglobal.net](mailto:certifiedwelding@sbcglobal.net)

**Com Train LLC.  
Tower Climbing Safety  
& Rescue 2009**



Spider Cage Equipment - 400 ft Range



Welding to AWS D1.1 Structural and Welding Specifications.



Equipped to weld with Flux Core Shielded and Inner shield



300 gallon Mobile Fire Prevention System.

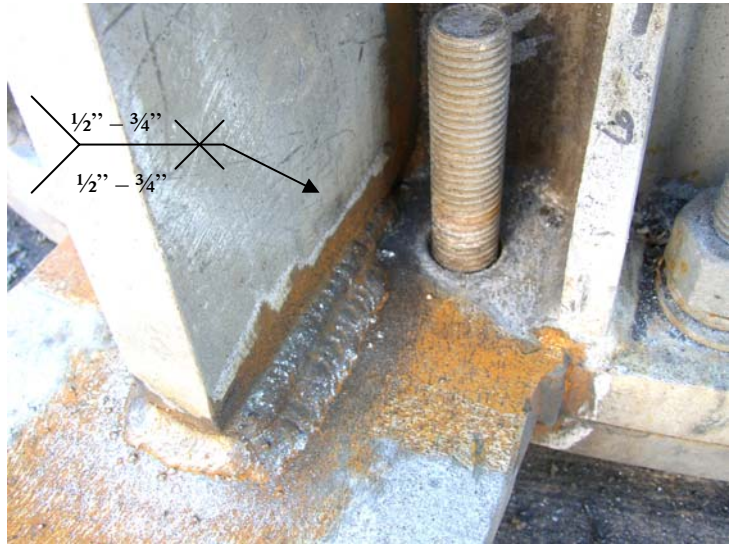




**Full Penetration with Bearing Plate and 52" Stiffener**



**Full Penetration Of 52" base to Tower Stiffener 3/4" Fillet Weld**



**Before Reinforced Welding**



**Finished Product**

**Map Tower, Grind, Clean, and Tack Stiffeners  
Weld twelve 18" partial penetration. Clean and  
Paint with Cold Galvanize, 3 coats (7 mils.)  
Document and Catalog Picture**



**Map Tower**



← **Tack and Weld both base to Tower Stiffeners. Tack and welds bearing plates and anchor collars.**

**Clean and paint all welds stiffeners, and anchor collars with cold galvanized paint. 3 coats = 7 mils** →







**Map Tower, Clean and Grind. Prepare Surface for welding.**

## **Completed Tower**



**Preheat both stiffeners and base of Tower. Prevents Porosity and weld failure.**



**Clean, Tack and Weld Transition Stiffeners**



**Transition Stiffeners Completed**